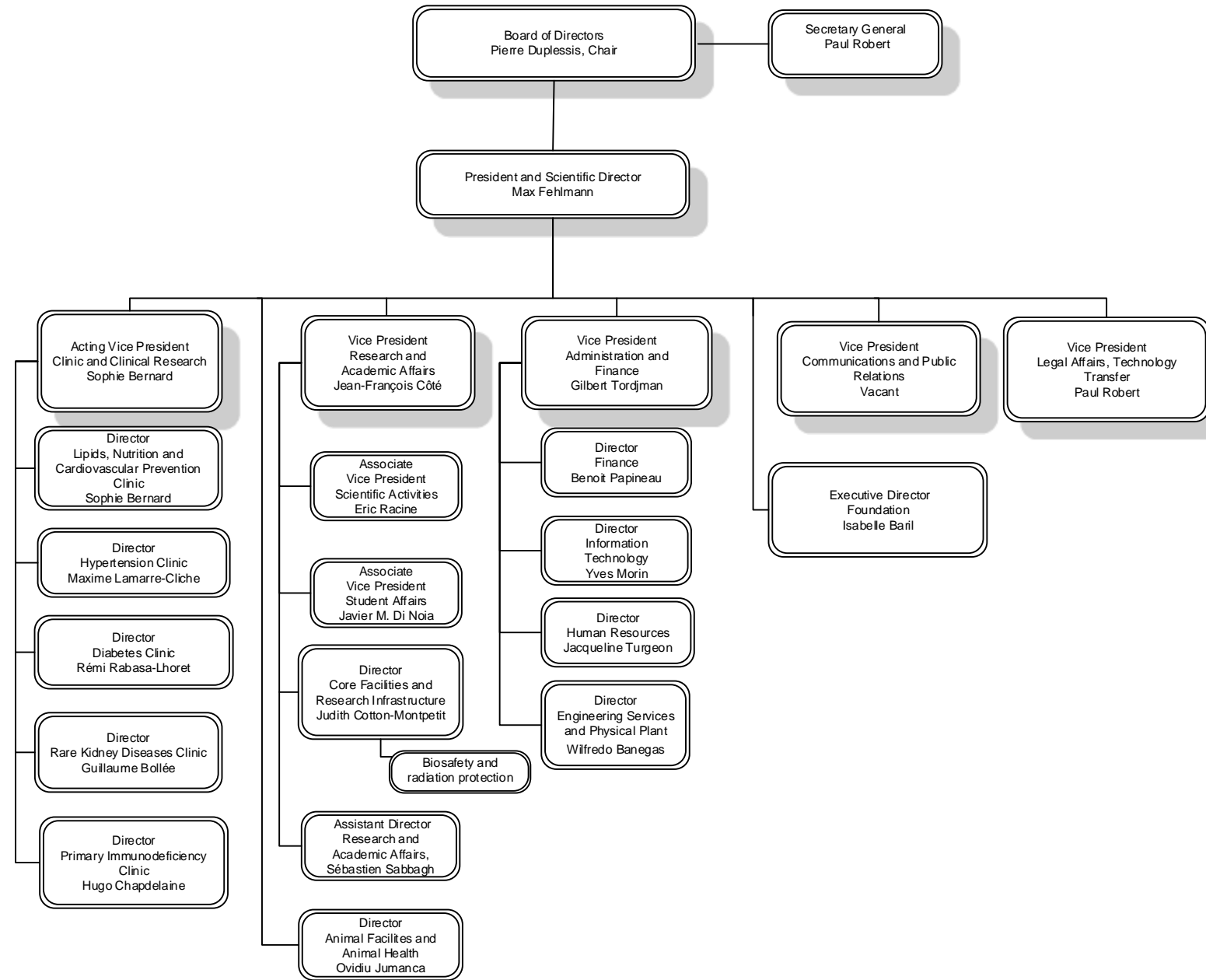
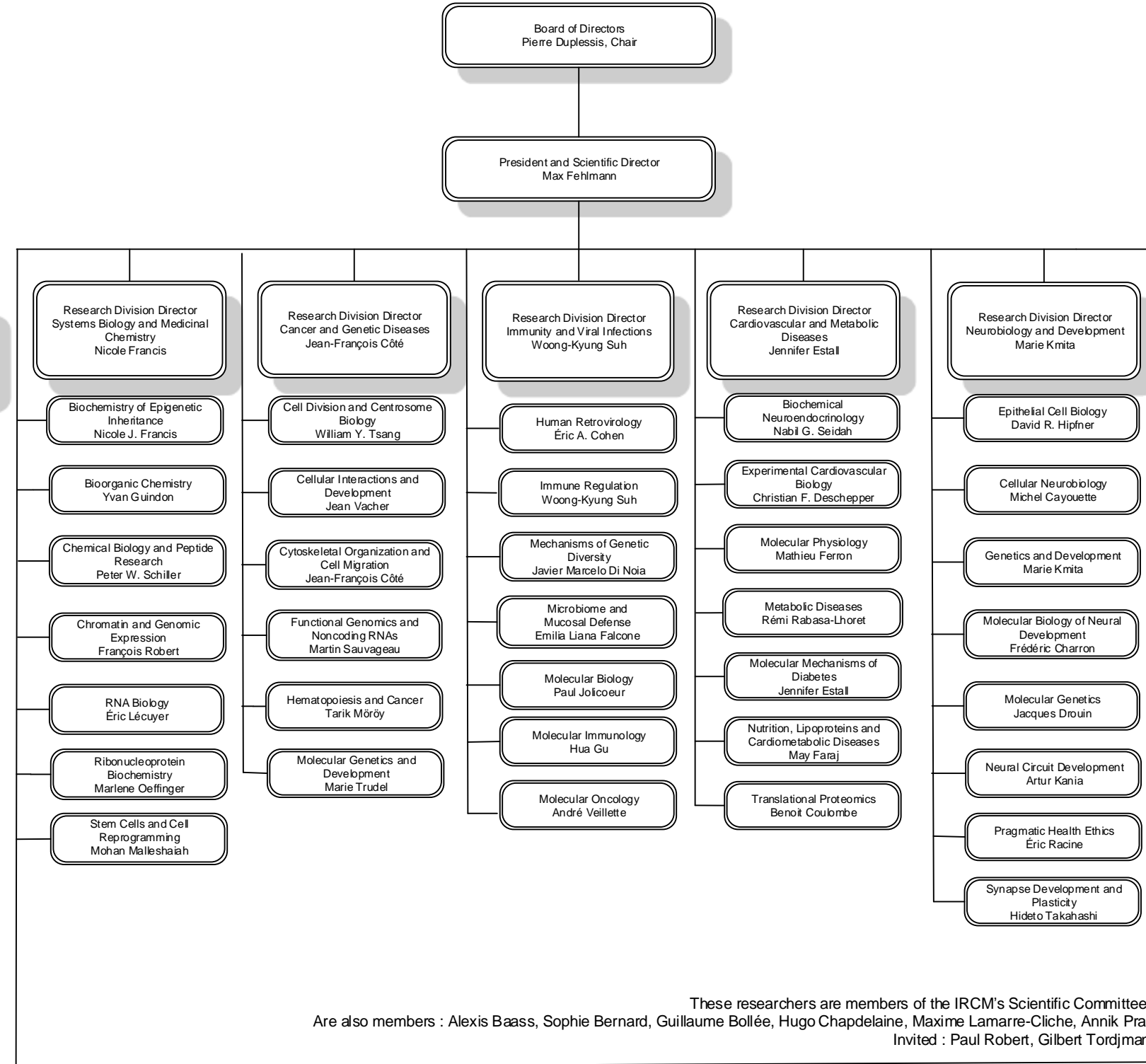


**Administrative Organization**



**Scientific Organization**



These researchers are members of the IRCM's Scientific Committee.  
Are also members : Alexis Baass, Sophie Bernard, Guillaume Bollée, Hugo Chapdelaine, Maxime Lamarre-Cliche, Annik Prat  
Invited : Paul Robert, Gilbert Tordjman